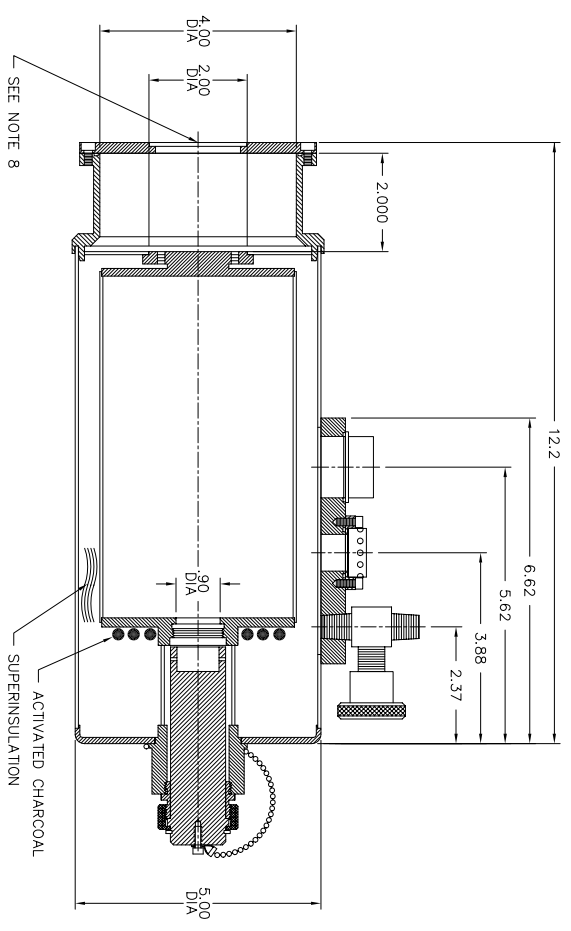
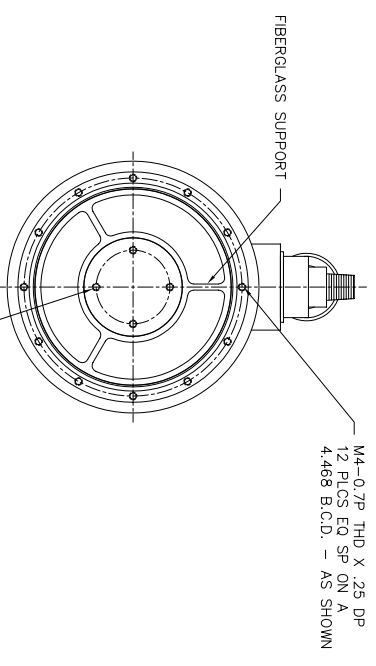
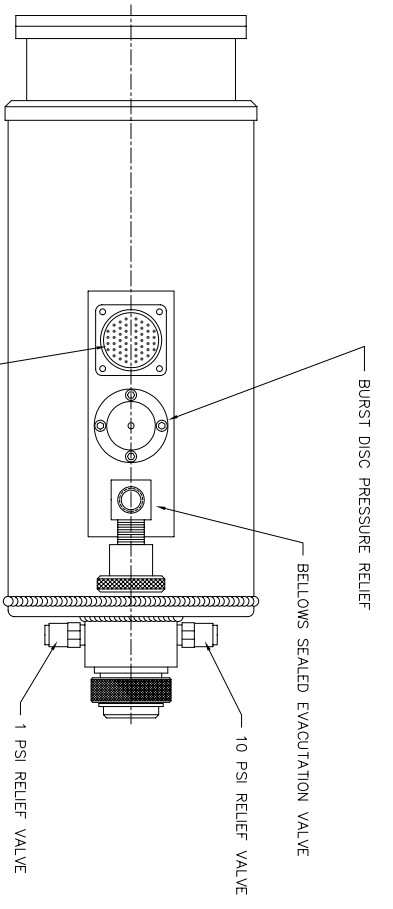


ALL POSITION CONFIGURATION



- NOTES:
- 1) LN2 CAPACITY = 1.3 LITERS (STANDARD CONFIGURATION)
 - 2) LN2 HOLD TIME = 40 HOURS (WITH 300 mW CUSTOMER LOAD)
 - 3) LN2 CAPACITY = 0.54 LITERS (ALL POSITION CONFIGURATION)
 - 4) LN2 HOLD TIME = 16 HOURS (WITH 300 mW CUSTOMER LOAD)
 - 5) DEWAR TO SHIP UNDER VACUUM USING A WINDOW BLANK
 - 6) FINISH: PPG UROTEC PAINT (MEDIUM TEXTURE) COLOR: KADEL GRAY
 - 7) CONNECTOR WIRED WITH #36 CU WIRE (TAPED TO CELL POST)
 - 8) WINDOW MOUNT ACCEPTS A 50mm DIA X 2mm THICK EPOXY-IN WINDOW

REVISIONS			TOLERANCES (EXCEPT AS NOTED)		STOCK SIZE	
NO	REMARKS	DATE	BY	FRACTIONAL DECIMAL	MATERIAL	APPROVED BY
1	UPDATED TIL PORT & WINDOW MOUNT	6/1/99	TAW	$\pm 1/64$	ALUMINUM	TAW
2				$.XX \pm .005$		
3				$.XX \pm .010$		
4				$\pm .005$		
5				RADIUS OR CHAMFER		
6				OR BETTER		
7				DIMENSIONS ARE IN INCHES		

		KADEL ENGINEERING CORPORATION 1627 EAST MAIN STREET DANVILLE, INDIANA 46122	
DATE	8/12/97	DRAWING NUMBER	KR497-41C1
REV	1		X2125